



## GL-70A Data Sheet

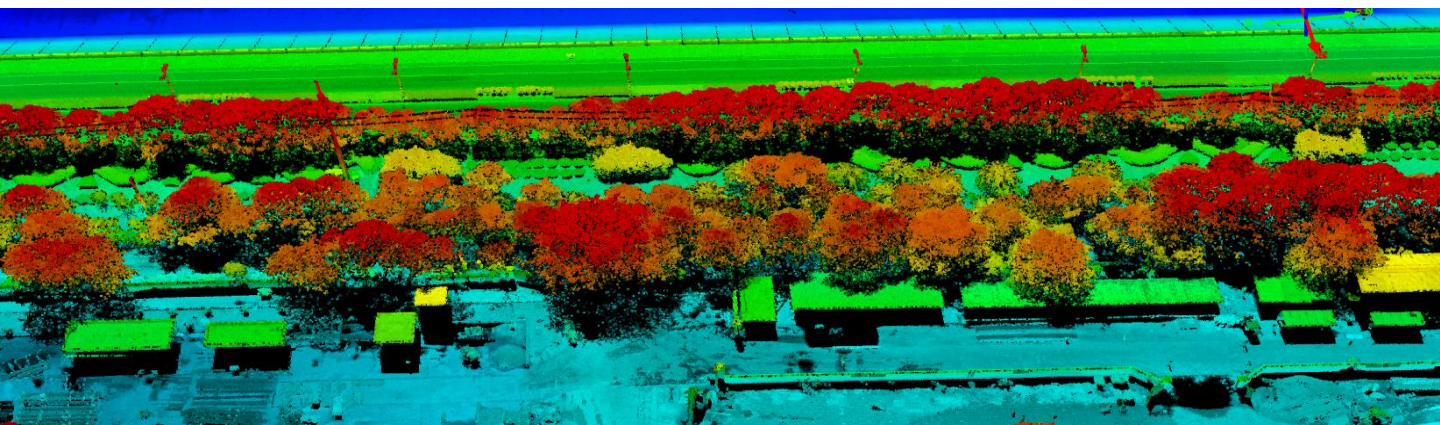


GL-70A is the next generation of GL-70, a product suitable for both corridor and area mapping. Based on VUX-1LR, high accuracy IMU/GPS, and a 50mp camera, this system is lighter with longer range, it can be used to fly higher and covers more area on either UAV or manned helicopters. GL70A automatically collects highly accurate laser and image data via its onboard system controller. It can produce DOMs, DEMs, DSMs and DTMs which may be further processed to produce 3D models for various industries.

- **820khz Pulse rate**
- **330 deg FOV**
- **1-200hz scan rate**
- **FOG IMU**
- **50mp calibrated camera**
- **Rugged system controller**
- **Autonomous operation**
- **One button startup**
- **Weights 8.5kg**
- **Fits in one pelican case**
- **Operating range 750m**
- **Up to 400pts/m<sup>2</sup>**
- **Install in minutes**

Typical applications:

- River banks, coastal lines mapping
- Land surveying
- Water resources monitoring
- quick response mud slid analysis
- high accuracy mid area mapping



# GL-70A Specifications

Item	Specification
Laser class	1 class, eye safe
Wave length	Near Infrared
Laser beam divergence angle	0.5 mrad
Scanning range	5m to 1350m
Scanning angle	User selectable to 330deg
Pulse rate	820KHz
Point density	Up to 400pts/m <sup>2</sup>
Scanning mechanism	Rotating mirror
Pitch/Roll accuracy	0.005 deg
Heading accuracy	0.017 deg
Control Unit	Win 8 GL system controller
Storage capacity	700GB
Single scanning swath	Up to 1350m
Image sensor type	CMOS, 36mm×24mm (full frame)
Image dimension	8688×5792 (50mp)
Effective operating range	conductors: 150m/other objects: 750m
Voltage	12 - 30V
Power consumption	95W (Max. )
Dimension (L×W×H)	458mm×222mm×138mm
Weight	8.1kg
Working temperature	0°C to 40°C
Storage temperature	- 10°C to 50°C

